

MUSÉE
UNTER
LINDEN

Groups

2025 edition

Summary

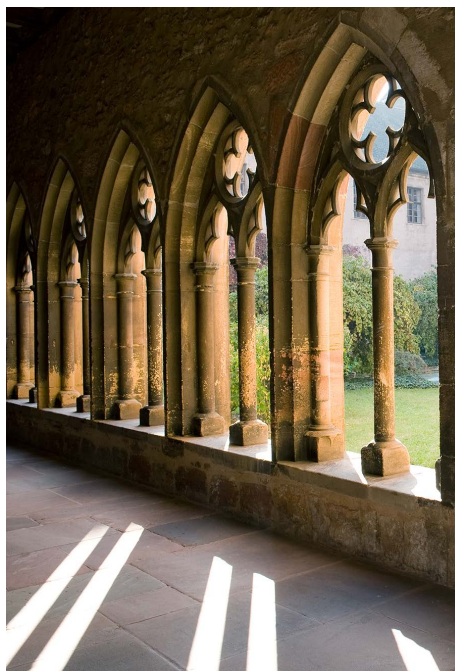
	1	The Musée Unterlinden
p.3	1.1	Presentation
p.4	1.2	Map of the museum
p.5	1.3	Collections
p.10	1.4	The Isenheim Altarpiece
p.12	1.5	Mediation and digital tools
	2.	News
p.14	2.1	“Art and Gastronomy” package
p.16	2.2	Museum facilities
	3	Group tours
p.18	3.1	Independent visits
p.19	3.2	Guided tours
	4	Events and private tours
p.21	4.1	Events
p.22	4.2	The Café Restaurant Schongauer
	5	Reception details
p.23	5.1	Booking
p.24	5.2	Special measures
p.25	6	Practical information

1 The Musée Unterlinden

1.1 Presentation



Caption 1 : View of the Musée Unterlinden © Musée Unterlinden, Colmar



Caption 2 : View of the cloister © Musée Unterlinden, Colmar



Caption 3 : View of the staircase © Peter Mikolas, Herzog & de Meuron, Musée Unterlinden, Colmar

The Musée Unterlinden offers visitors the opportunity to explore rich and varied collections covering nearly 7,000 years of history, from the Neolithic period to 20th century art, with more than 3,500 works on display. Visitors will be able to admire numerous art forms, such as painting, sculpture, printmaking and more. The museum reveals the face of Colmar in centuries past and showcases the virtuoso skills demonstrated by its artists and craftsmen (furniture, textiles, ceramics, glassware, etc.).

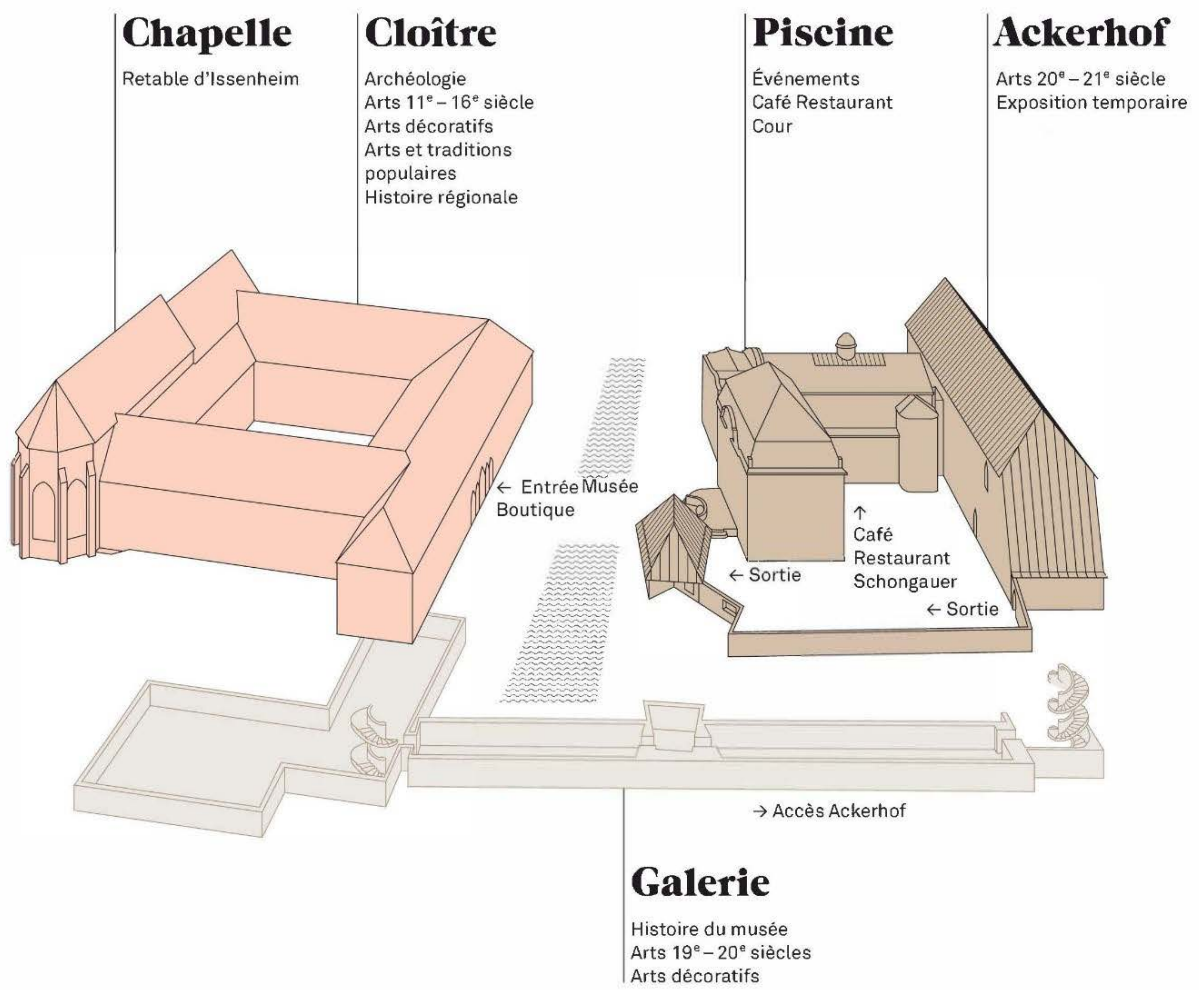
A bit of history

As they explore the collections, visitors will discover the successive stages of over 150 years of the museum's history. The walls and the artworks bear witness to the dynamic work of the Société Schongauer, the association that runs the Musée Unterlinden.

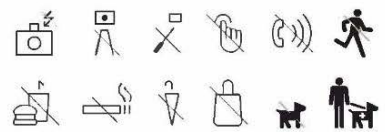
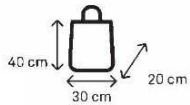
The museum was established in 1853 in the former Dominican convent of Unterlinden. At that point, it was restricted to the chapel, in which most of the collections were displayed. Space soon began to run out, and the works ended up gradually occupying the whole of the building from the second half of the 20th century.

At the dawn of the 21st century, the museum was still in need of more space. The closure of the nearby municipal baths in 2003 and their transfer to the museum made it possible to envisage an ambitious extension and complete reinstallation of the collections. In 2009, the Basel-based architectural practice Herzog and De Meuron was chosen to undertake the works, leading to the opening of the new Unterlinden in December 2015.

1.2 Map of the museum



Au Musée, taille maximale des sacs:
Handgepäck, maximale Größe:
Museum bag allowance, maximum size:



1.3 Collections

The « Cloître »

Archaeology

Archaeology section

As an encyclopaedic museum, the Musée Unterlinden conserves and displays collections charting the cultural and artistic heritage of Alsace from the prehistoric period to the present day. The re-opening of the section devoted to prehistoric and protohistoric archaeology (the Bronze Age and Iron Age) will enable the public to rediscover rare objects such as the large Neolithic Linear Band Ware vases or the gold jewellery of Ensisheim.

In conjunction with the complete renovation of the former cellar of the Dominican convent of Unterlinden, the archaeological collections were reinstalled in a more modern display, with an educational approach that will be accessible to all sections of the public.

The chronological presentation will enable visitors to discover the evolution of the different aspects of human habitation in Alsace: agriculture, crafts, habitat, domestic life, funerary practices, etc. Broader themed presentations, exploring the different branches of archaeology or the techniques used to create the objects, offer the public a different approach to archaeology and the collections.

Introduced in 2022 on the occasion of the European Archaeology Days, a new mediation tool, the ArchéoQuiz, also makes it possible to confront archaeology with questions of society and current affairs, on your own, with family or with friends.

Roman and Merovingian collections

In the adjacent room, the collections from the Roman period are displayed around the Bergheim mosaic, one of the first works to enter the museum's collections. This mosaic, in an exceptional state of preservation belonged to a Roman villa dating from the 3rd century Roman villa. A section of the tour is also devoted to archaeological finds from the Middle Ages made in the Colmar region.



Ceramics with ribbon decoration, Neolithic, © Musée Unterlinden, Colmar



Spiral leggings, Bronze Age, © Musée Unterlinden, Colmar



Gold ornaments from Ensisheim, Iron Age, © Musée Unterlinden, Colmar



Mosaic from Bergheim, Roman period, © Musée Unterlinden, Colmar

11th to 16th-century art

This section, which cemented the museum's international reputation, covers five centuries of history, from 11th to 16th century.

Through the paintings, sculptures, drawings, prints and altarpieces on display, you will be able to discover the techniques used by the artists and craftsmen of the era: burin engraving on copper, painting on wood panel, sandstone and lime-wood carving, laying and decorating gold leaf etc. You will also discover that all these works commissioned to adorn churches originally presented scenes from the Bible or the lives of martyrs and saints that have nothing to envy our modern TV series in terms of violence! The decapitation of St John the Baptist, the princess devoured by the dragon, St John immersed in a vat of boiling oil etc.

The first rooms of the tour are representative of the artistic creation of the 14th and 15th centuries (altarpieces, panels, sculptures, stained glass, objets d'art).

In the *Passion Altarpiece* painted by Gaspard Isenmann in 1465 for the Collegiate Church of Saint-Martin in Colmar, you will discover how the artist, who had a flair for storytelling, sketched and caricatured the painted figures. You'll also be able to experience the commissioning of the work in 1462 at first hand, thanks to the text explaining to the painter what the canons of the collegiate church wanted, how much he would be paid and how much time he had to complete it.

You will wander through the museum's former convent, on the ground floor and mezzanine floor, in 11 rooms a chronological tour punctuated by three thematic areas: the first is devoted to the Colmar painter Martin Schongauer, the second to the Isenheim Altarpiece and finally the collegiate church of Saint-Martin in Colmar.



Altarpiece from the Tempelhof in Bergheim: *The Preaching of St John*, c. 1445
Jost Haller © Musée Unterlinden, Colmar

The chronological presentation allows you to follow the evolution of the creations. In painting, the gradual abandonment of gold leaf gives way to the appearance of landscapes and mastered perspective. In sculpture, the aim of reproducing reality as closely as possible, but also movement through body postures or animated draperies, takes precedence over hieratic and unnatural works.

The artist Martin Schongauer is particularly highlighted in the museum. The late 15th century painter is from Colmar. The son of a goldsmith, he gave his letters of nobility to copperplate engraving and the great German artist Albrecht Dürer considered him to be his master. The museum presents some of his engravings in rotation, marvels of delicacy and preciousness.

His 116 engravings, published in hundreds of copies, circulated throughout the old continent, from Spain to Finland and from Italy to the kingdom of France via Bohemia. They served as models for paintings, sculptures and art objects. This phenomenon is very well illustrated in the museum. But you will also see two altarpieces painted by himself and his workshop, the Dominican Altarpiece and the Orlier Altarpiece. In the latter, the painter combines the charm of the painting he learned in Colmar with the naturalism invented by his predecessors in the southern Netherlands. Go and see the painted lily of the Orlier Altarpiece. Its wilting leaves and ripening flowers make you want to smell its powerful fragrance.



View of the Altarpiece by Jean d'Orlier,
1470-1475, Martin Schongauer
© Musée Unterlinden, Colmar

The highlight of the collection is the Isenheim Altarpiece, a masterpiece of early 16th-century art that no one can fail to appreciate.



View of the Isenheim Altarpiece, 1512-1516, Grünewald © Musée Unterlinden, Colmar

Decorative Arts - Popular Arts and Traditions

The ethnographic collections illustrate the diversity and formal inventiveness of the region's popular arts and traditions: the Musée Unterlinden presents a collection that illustrates a number of cultural practices, such as love chests, under-glass painting, cake moulds or painted furniture.

The reconstruction of a wine-maker's cellar within the museum illustrates the importance of the art of grape cultivation and winemaking, an essential aspect of the popular arts and traditions of Alsace and the economic life of the Colmar region. The cellar reconstruction is based around two large 17th-century presses and four large 18th-century barrels, supplemented by wine-making tools and accessories.

The museum also exhibits a remarkable collection of gold and silverware spanning the 16th to 18th centuries: 17th-century silver-gilt tankards and hanaps (large drinking vessels), and a collection of objects crafted by the Schrick family, one of the leading dynasties of Alsatian goldsmiths in the 18th century. The collection is dominated by the Trois-Epis treasure, discovered in 1863 in Ammerschwihr, near Colmar, one of the most important collections of civilian Renaissance gold and silverware preserved in France.

Visitors will discover ceramic ware from Alsace and Lorraine produced in the 18th and 19th centuries, a golden age for French producers of glazed earthenware: the Hannong factories in Strasbourg and Haguenau, the Lunéville and Niderviller factories in Lorraine, and the 19th-century works of Théodore Deck, which stand out for the incredible originality of their forms and the quest to create new colours.

The redevelopment of the museum continue

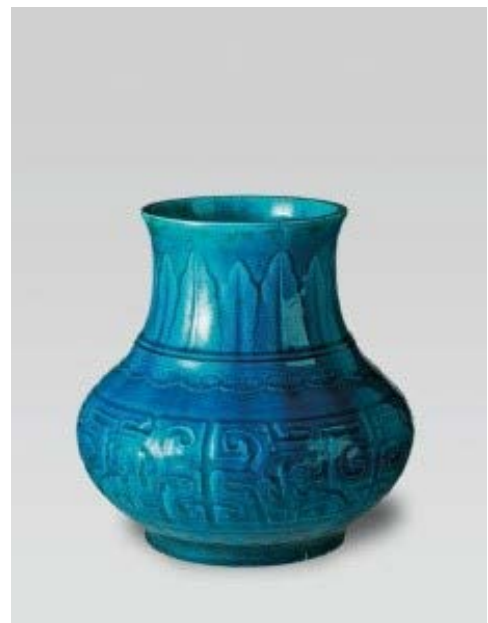
The first floor of the Musée Unterlinden's cloister will be occupied by rooms presenting the collections of arms, the decorative arts, popular arts and traditions and the history of Colmar. Currently, visitors can discover the Trois-Epis treasure, a major collection of Renaissance gold and silverware, as well as a selection of Alsatian objects (ceramics, gold and silverware, popular arts and traditions, furniture, musical instruments).



View of the Alsatian cellar © Musée Unterlinden, Colmar



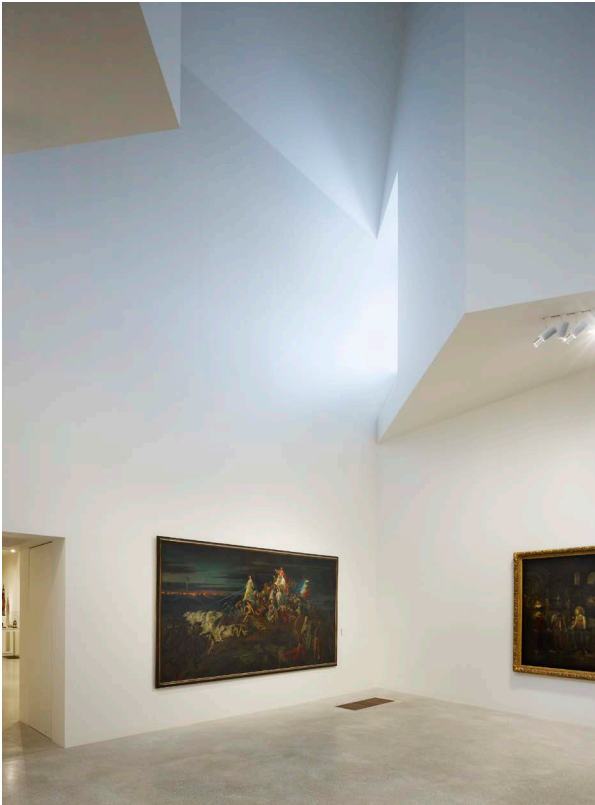
Parade shield, c. 1590, Attributed to Hans Steiner
© Musée Unterlinden, Colmar



Chinese vase, c. 1870, Théodore Deck,
© Musée Unterlinden, Colmar

The « Galerie »

Modern and Contemporary Art

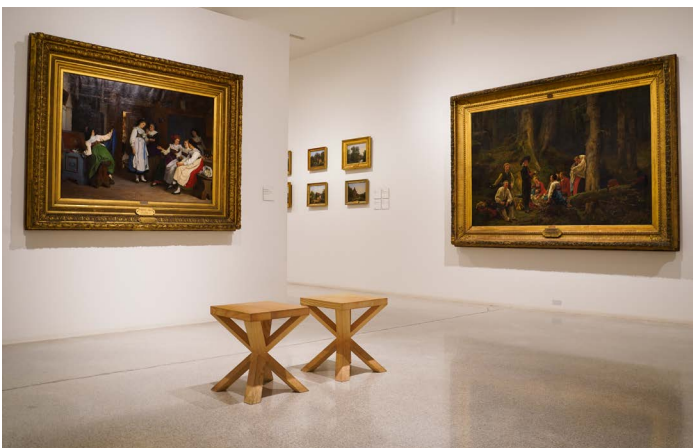


View of the « Petite Maison », © Musée Unterlinden, Colmar

The Musée Unterlinden's modern and contemporary art collection covers the periods running from the late 19th century up to the present day. The presentation begins in the underground gallery connecting the former convent to the new building created by Herzog & de Meuron (Ackerhof).

For several years now, the Musée Unterlinden in Colmar has included in its cultural policy acquisitions and programmes that focus on the great figures and great pages of the modern artistic adventure, alongside its own collections.

The extension of the museum to the former municipal baths, where the entire collection of historical art from the 20th and 21st centuries can finally be displayed, has encouraged and motivated the development of this collection: among the spectacular additions, we can mention the bequest of the collection of Jean-Paul Person (1927-2008) as well as the donation of a large group of 124 works by the American painter Joe Downing (1925-2007).



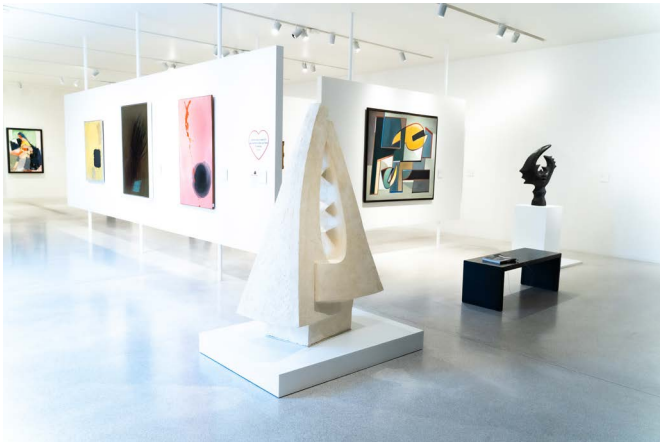
View of the « Galerie » © Musée Unterlinden, Colmar



Bust of a seated woman, 1960, Picasso © Musée Unterlinden, Colmar

The « Ackerhof »

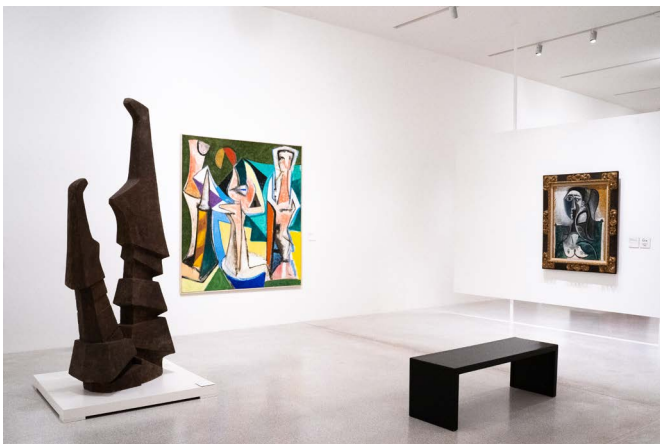
Modern and Contemporary Art



View of the permanent exhibition rooms - Ackerhof
© Musée Unterlinden, Colmar



View of the permanent exhibition rooms - Ackerhof
© Musée Unterlinden, Colmar



View of the permanent exhibition rooms - Ackerhof
© Musée Unterlinden, Colmar



View of the permanent exhibition rooms - Ackerhof
© Musée Unterlinden, Colmar

The two levels of the Ackerhof show several currents of abstraction and figuration that are particularly well represented in the museum's collections, while at the same time following the stylistic evolution of certain great names of 20th century art such as Dubuffet.

This setting for the modern art collection blends in with the other buildings through its brick cladding and copper roofing, but also through the openings that form Gothic arches.

Due to regular loan requests, the display of works from the 1950s to the present day is regularly changed.

Nevertheless, the Musée Unterlinden ensures that works by the great representatives of the history of art from Impressionism to the present day are on display: Monet, Renoir, Bonnard, Delaunay, Hartung, Fautrier, Valadon, Rouault, Léger, Picasso, Dix, Degottex, Hantai, Hélion, Magnelli, Mathieu, Poliakoff, De Staël, Bram Van Velde, Vieira da Silva, Baselitz, etc.

1.4 The Isenheim Altarpiece



Grünewald, *Isenheim Altarpiece*, 1st opening, *The Annunciation*, *The Angels' Concert*, *The Virgin and the Child*, *The Resurrection*, 1512-1516, mixed technique on limewood (tempera and oil) © Musée Unterlinden, Colmar. Photograph: Le Réverbère / Mulhouse

What is the Isenheim Altarpiece?

The Isenheim Altarpiece is one of the world's most famous artworks.

The altarpiece was made for the Alsatian village of Isenheim, from which it takes its name. The monumental polyptych* (which was supposed to be 8m high and 6m wide) was painted between 1512 and 1516 by Grünewald (c. 1475, 1480-1528) and sculpted by Nicholas of Haguenau (active in Strasbourg from 1485 to 1526) to adorn the high altar of the Antonite monastic hospital complex of Isenheim, which was established to care for sufferers of the disease known as St Anthony's fire. The disease was a genuine plague in the Middle Ages, caused by the ingestion of rye infected with ergot fungus. This cereal parasite found in poor-quality bread caused hallucinations, often verging on insanity, as well as necrosis of the body's extremities. Sufferers came to receive care at the monastic complex, which was also known for amputations carried out by lay surgeons.

**polyptych: a set of interlinked panel paintings or sculpted reliefs, often consisting of side leaves that could be folded over a central section.*

Why is it regarded as a masterpiece ?

Dating from the 16th century, the altarpiece was regarded as a masterpiece from the outset, and has been protected and venerated down the centuries for its artistic brilliance, the richness of its colours and the expressiveness of the scenes and figures created by the two artists. Grünewald was the first artist to paint Christ's suffering in such a radical manner, which must have

enabled the sick to identify with him and compare themselves with Christ in his dying agony. From Picasso to Bacon by way of Matisse and Dix, countless artists have been deeply moved by this masterpiece, which is genuinely one of the most extraordinary and enigmatic creations in the history of Western art.

A recently restored work

Over a five-year period (2018-2022), the Isenheim Altarpiece has been closely studied by researchers and restorers. The painted panels, their frames, the sculptures and the caisse (the wooden case that contains them) have been meticulously restored. The removal of layers of varnish that had developed yellow or brown discoloration has once again revealed the bright, contrasting colours, and certain details have reappeared, such as an angel in a door frame, an angel's private parts, a little gateway, some figures in the scenery of the Resurrection, dates and figs on the trees etc. But the restorers also discovered traces of candle burns or chips in the paint caused by the rod used to open and close the painted wings. The sculptures, which make extensive use of gold and silver leaf in their polychrome decoration, have recovered their brilliance, as well as the subtle rendering of the flesh tones in each of the faces and the richness of the ornamentation. The restoration has returned a sense of colourful harmony to the whole altarpiece and demonstrated the consistency between the paintings and the sculptures.

Before / After restoration

Before:

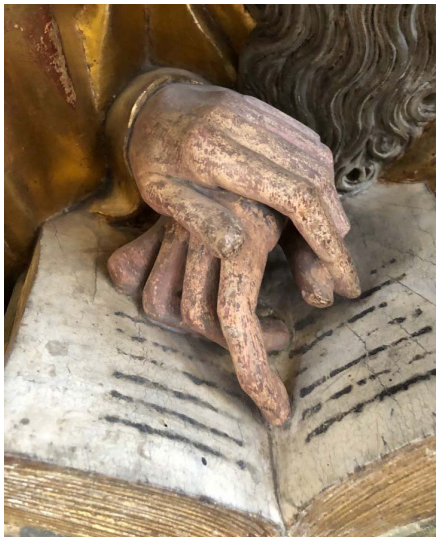


After:



Grünewald, *Isenheim Altarpiece, The Deposition of the Body of Christ*, 1512-1516, mixed technique on limewood (tempera and oil) © Musée Unterlinden, photograph: Le Réverbère / Mulhouse

Before:



After:



Sculptures of the Apostles, Isenheim Altarpiece, Detail, Nicolaus of Hagenau, 1512-1516, mixed technique on limewood (tempera and oil) © Musée Unterlinden, Colmar

With a member of the museum's interpretation team, discover all of the altarpiece's secrets: from its creation in the early 16th century to its spectacular restoration between 2018 and 2022.

1.5 Mediation and digital tools

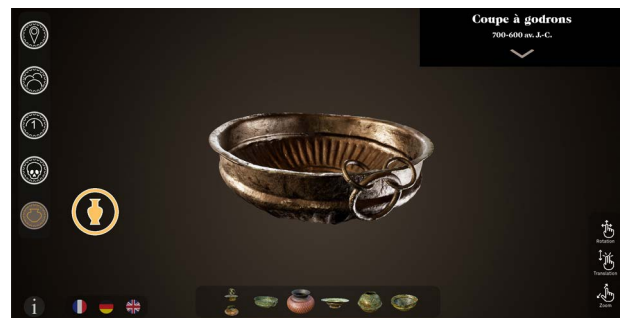
With the support of Inventive, a company specializing in the development of digital tools for architecture and cultural heritage, the Musée Unterlinden is reinventing the approach to major works in its collections. Throughout the museum's exhibition tour, images, video, sound and virtual reality are used to help visitors understand the works of art, through innovative interactive tools. Easy to use, these tools offer visitors an original and entertaining experience, enabling them to experience the museum in a different way.

Each digital device is available in three languages: French, German and English.

Archaeology

Metal tableware from Appenwihr Entresol

The device takes the form of a touch screen integrated into the display case in which the Appenwihr metal tableware is exhibited. The Appenwihr drinking set and copper-alloy pyxis were discovered in 1955 by Madeleine Jehl and Charles Bonnet, during the excavation of Bronze Age and Iron Age mounds in the Kastenwald forest. The context in which this burial site was discovered is presented at different scales: visitors explore the tomb and burial mound 1, then move through the necropolis among the other mounds. An interactive map shows where the objects were made, providing evidence of long-distance trade. 3D modeling of the objects allows visitors to manipulate them virtually and observe them from every angle. A reconstruction of their original state, including any missing parts, is proposed.

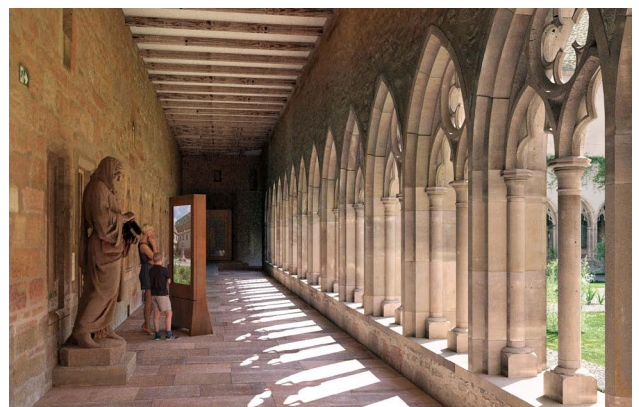


Modeling of a gadrooned bowl from the tomb in tumulus I of Appenwihr
© Mikael Sévère – www.msevere.fr, Musée Unterlinden, Colmar

Art from the 11th to the 16th century Monument in memory of Martin Schongauer Cloister

Exhibited in the north gallery of the cloister, Martin Schongauer's statue is recontextualized thanks to an immersive installation.

This statue is part of the Monument à la mémoire de Martin Schongauer commissioned from Auguste Bartholdi by the Société Schongauer. Originally placed in the cloister garden, the fountain was dismantled in the 1950s, when work was undertaken to restore the medieval cloister. While the central statue is now housed in the Musée Unterlinden, the four allegories are on display in the Musée Bartholdi and part of the fountain has been installed in Place Saint-Joseph in Colmar.



Modeling the digital device dedicated to Auguste Bartholdi © Inventive Studio – www.inventive-studio.com, Musée Unterlinden, Colmar

In conjunction with loans from the Musée Bartholdi (Allegory of the Study and preparatory model of the monument), the digital device offers a 3D reconstruction of the fountain in its 1860 state. Sound effects complete the experience.

Isenheim Altarpiece

This device, available in French, German and English, is primarily designed for a young public (7-12 years old), to help them understand religious works of art that are aesthetically and iconographically far from their contemporary references.

The Altarpiece Manual

This animated film, which lasts around three minutes, looks at the stages in the life of an altarpiece, from its context of creation to its functions and uses. The device answers the following questions in an offbeat tone: What is an altarpiece? What is its purpose? How does it work?



© Musée Unterlinden, Colmar

L'Atelier - Dream and create with the Isenheim Altarpiece #1

L'Atelier is a mediation space entirely dedicated to the Isenheim Altarpiece, located on the tribune of the Chapel. Conceived as a space for experimentation, a place where visitors are encouraged to think and create, L'Atelier invites you to take possession of the Isenheim Altarpiece through a set of tools created in collaboration with a contemporary artist.

Like a laboratory in perpetual transformation, L'Atelier regularly invites an artist to renew this space in a co-creative dialogue around the altarpiece.

Juliette Steiner, director, visual artist and actor, has accompanied the production of four tools that invite you to approach the Isenheim Altarpiece through theater, emotions, drawing and words.

Working alone or with others, create your own comic strip character around the Isenheim Altarpiece, imagining his or her adventures and becoming a "saint" for a few minutes!



© Musée Unterlinden, Colmar

2.1 “Art and Gastronomy” package

“Apéro-Cloître tour” :

Enjoy a unique experience and discover the Musée Unterlinden’s collections and history. After a fascinating guided tour, share a special moment with your guide or mediator over a traditional Alsatian aperitif. In the heart of the garden or in one of the galleries (depending on weather condition), you’ll enjoy this original and convivial aperitif in the exceptional setting of the cloister.

Discovery tour, lasting one hour, and time for discussion with your guide or mediator over an aperitif served in the cloister (1 glass of crémant and 1 pretzel per person). Duration: 1h30 / Price: 39€ per person (subject to availability; except Mondays and Tuesdays; only from April to October).

The “apéro-cloître” tour is based on a maximum of 9 to 17 people, including guide or mediator. The price per person includes the guide service, museum entrance tickets and aperitif. Guided tours are available in French, German and English.

Wine-tasting tour “Art, wine and gastronomy” :

The Musée Unterlinden houses to the famous Issenheim Altarpiece, but did you know that you can also discover the exceptional cultural marriage between its collections, gastronomy and wine? Discover a fabulous oenocultural journey through the museum’s collections that will for sure surprise you. A wine tasting session will be offered by a winery to round off this unique visit.

“Art, wine and gastronomy” themed tour, lasting one hour and half, followed by a wine tasting in the Salle Louis Hugot Duration: 2h15 / Price: €30 per person (subject to availability).

The “Art and Wine” tasting tour is based on 25 people, including guide or mediator. Price per person includes guide service, museum admission and wine tasting. Guided tours are available in French, German and English.



© Musée Unterlinden, Colmar



© Musée Unterlinden, Colmar

Gourmand'Art

Choice of discovery or themed tour, lasting 1 hr 30 min.

Lunch at Café Restaurant Schongauer
3 courses including drinks (1 glass of wine for the starter and 1 glass of wine for the main course, water, coffee or tea).

One menu for the whole group.

*Service available from Wednesday to Sunday.
Outside museum opening hours, by prior arrangement.*

Duration: 3 hours / Price: €49 per person



© Musée Unterlinden, Colmar

Your museum!

Consider a private hire of the museum on our closing day or in the evening.
Discovery or themed visit of your choice, lasting 1 hr 30 min.

Lunch (Tuesdays only) or dinner at the Café Restaurant Schongauer
Aperitif, 3 courses with drinks included (1 glass of wine for the starter and 1 glass of wine for the main course, water, coffee or tea).

One menu for the whole group.

Duration: 3 hours / Price: €99 per person

Depending on restaurant opening



© Musée Unterlinden, Colmar

“Gourmand'Art” and “Your museum !” are based on a maximum of 25 participants, including the guide.

The price per person includes the cost of the guide service, entrance tickets to the museum and the desired service (lunch/dinner outside museum opening hours).

Subject to availability at the time of booking.

Guided tours are available in French, German and English.



© Musée Unterlinden, Colmar

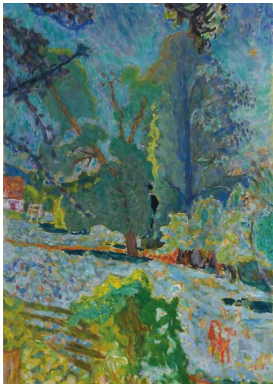
2.2 Museum facilities

Works on load in 2025

Loaned works are rehung at the Musée Unterlinden approximately one month after the announced end of the exhibition.



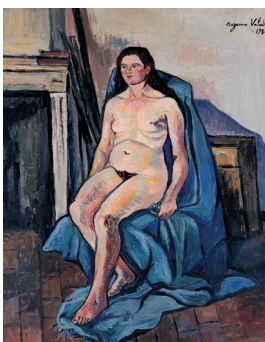
La Nature morte aux bouteilles et aux livres is on loan to the Musée Marmottan-Monet in Paris, for the exhibition “Trompe l’œil” which will take place from October 17, 2024 to March 2, 2025.



Le Paysage normand from Pierre Bonnard is on loan to the Fondation Marguerite et Aimé Maeght in Saint-Paul-de-Vence, for the exhibition “Amitiés – Bonnard, Matisse” which runs until November 17, 2024.



Jacqueline de La Baume-Dürbach’s *Guernica* tapestry is on loan to the Department of Cultural Assets and Sicilian Identity in Palermo, as part of their exhibition “Le triomphe de la mort et Guernica, deux modèles comparés. Death as theater and its representation in art”, which runs from December 14, 2024 to March 3, 2025.



The *Nu au châle bleu* by Suzanne Valadon is on loan to the Musée National d’Art Moderne in Paris, as part of their “Suzanne Valadon” exhibition from January 15, 2025 to June 30, 2025.

Works on loan in 2025



Le Trésor des Trois-Epis is on loan to the Historisches Museum in Basel, as part of their “Archaeological Treasures” exhibition, to be held in autumn 2025.



Hommage à Monsieur de Vauban by Georges Matthieu is on loan to the Centre Pompidou at the Monnaie de Paris, as part of their “Georges Matthieu” exhibition from April 11, 2025 to September 7, 2025.



Claude Monet’s *La Vallée de la Creuse* is on loan to MASP São Paulo, as part of their “Monet’s ecology” exhibition from May 16, 2025 to August 24, 2025.



Lucas Cranach’s Melancholy is on loan to the Albertina, Vienna, as part of their “Gothic Modern” exhibition from September 19, 2025 to June 11, 2026.



Portrait d’un prisonnier de guerre by Otto Dix is on loan to the Archives Départementales de l’Hérault, as part of their “The Second World War in the Hérault” exhibition from October 1, 2025 to February 20, 2025.

3 Group tours

3.1 Independent visits

Would you like to make your own way around the museum at your own pace?

Don't hesitate to use the visit tools at your disposal:

- **Audioguides** 

Available in several languages: English, Dutch, French, German, Italian, Spanish, Japanese, Korean and Mandarin.

Depending on availability.

Cost: 3€ per audioguide, in addition to the admission ticket – subject to booking.

Don't forget to bring your headphones!
It is also possible to borrow it on site, free of charge. The material is disinfected in front of you.

Follow our Masterpieces tour to discover some of the most emblematic works showcasing the museum's collections and architecture.
As you make your way through the collections, follow the symbol!

- **Museum map**

Before your visit, download the museum map from our website or pick it up on arrival.

- **Written materials and multimedia tables**

Free access in the different exhibition rooms.
All visitor materials are cleaned and disinfected regularly.



Public © Musée Unterlinden, Colmar



Public © Musée Unterlinden, Colmar

3.2 Guided tours

Discovery tour

Must-sees

Discover the famous *Isenheim Altarpiece* and the major works of art at the Musée Unterlinden archaeology, fine arts, decorative arts and everyday life decorative arts.

Quick Tour

You don't have much time for your visit? Then discover the history of the museum and its architecture, and admire the museum's emblematic masterpiece: the *Isenheim Altarpiece*, in just 45 minutes.



Public © Musée Unterlinden, Colmar

Focus on a theme

Isenheim Altarpiece

100% Isenheim Altarpiece

A tour to know EVERYTHING about the famous Isenheim Altarpiece. From the historical conditions of its creation to the iconographic and stylistic choices of its creators, the sculptor Nicolas de Haguenau and the painter Grünewald. This visit allows you to understand why this extraordinary altarpiece has become one of the most famous works of Western art history.

The Isenheim Altarpiece and its restoration

An exceptional and privileged meeting with the famous Isenheim Altarpiece! Discover all its secrets and adventures: When, how and why was it created in the 15th century? What has restoration taught us about this masterpiece?



Public © Musée Unterlinden, Colmar

Show time!

How about playing a role in the dramatic world of the famous Isenheim Altarpiece? Like an open book, the Isenheim Altarpiece is brimming with figures, settings, feelings and emotions of incredible richness and variety. In the company of a mediator, try your hand at our theatrical improvisation game and become protagonists of this fabulous story.



Public © Musée Unterlinden, Colmar

Other guided tours

Focus on a theme

Archaeology, back to our origins

What if our ancestors' preoccupations were not so very far removed from our own? Buying local, recycling/repairing, displaying their social status with jewellery or everyday objects. An invitation to meet the men and women who lived in Alsace from the Neolithic to the Roman era.

Art'chitecture

From the peaceful garden of the 13th-century Cloister to the former Municipal Baths built in 1906 or the majestic Ackerhof building created by Herzog and De Meuron, immerse yourself in the variety of architecture that makes up the Musée Unterlinden today, capturing the museum's most beautiful views with the help of the expert eye of one of our guides.

Destination Modern Art

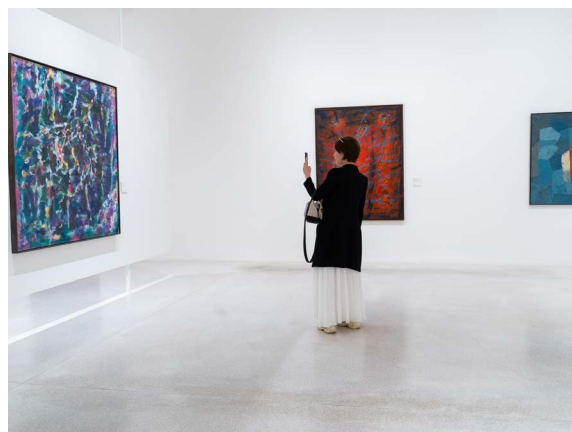
Claude Monet, Pablo Picasso, Jean Dubuffet... A tour to discover the Musée Unterlinden's collection of modern art, to understand how and why the Société Schongauer built up the collection, and to investigate the artists' practices and preoccupations. When the art of the past resonates with our present-day concerns.

Art & Gastronomy

A subject that has inspired artists for centuries, gastronomy and its history are magnificently portrayed in the museum's collections. Discover our gastronomy-themed tour and explore an exceptional marriage between art, wine and gastronomy.



View of the archaeology gallery © Musée Unterlinden, Colmar



View of the moderne and contemporary art gallery © Musée Unterlinden, Colmar

Information

All our guided tours are offered on a 1hr 30min basis for a maximum of 25 participants, including the guidance services.

Cost: €145 per group (entrance tickets not included)

The following tours are also available on a 1-hour (€105) or 2-hours (€165) basis per group (excluding entrance tickets):

- Must-sees
- 100% Isenheim Altarpiece
- The Isenheim Altarpiece and its restoration

Exceptions :

The must-sees: itinerary readjusted for the 1-hour visit.
Quick Tour: 45 min / €85 per group (entrance tickets not included)

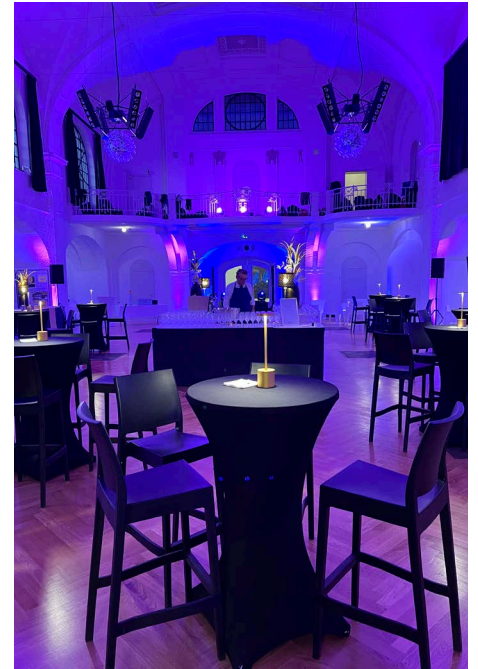
Please arrive 15 minutes beforehand to collect your ticket and equipment.

The cost of the guide service for all the participants per group is in addition to the entrance fee. Subject to availability of guides and time slots when booking.

Guided tours are available in French, German, English, Italian and Spanish. «Show time!» tour is available in French, German and English.

4 Events and private tours

4.1 Events



Caption illustration 1 : View of the cloister of the Musée Unterlinden © Musée Unterlinden, Colmar

Caption illustration 2 : View of the Piscine © Musée Unterlinden, Colmar

Caption illustration 3 : View of the Piscine © Musée Unterlinden, Colmar

Special events

We'll be happy to design your tailor-made event and offer you an unforgettable experience in the unique spaces of the Piscine, the courtyard of the pommarium, the cloister or even the entire museum. Conferences, product launches, festive evenings, cocktails or dinners, your events will find an exceptional and exclusive setting at the museum.

Seminars

Our fully-equipped Louis Hugot and Piscine rooms are ideal to organise your study days, board meetings or seminars. We offer a turnkey service to make your event a success!

Private tours

Your event can be complemented by a private tour of the museum's permanent collections or temporary exhibition. Private tours are available during the day and outside museum opening hours, for a more exclusive experience. A tour guide will help you discover the history of the museum and the collections for which it is renowned: archaeology, popular arts and traditions, decorative arts and fine arts, from ancient to modern art. Works by Picasso, Monet, Renoir, Dubuffet, Soulages, Bonnard, de Staël and others rub shoulders with those of the German Renaissance masters', including Grünewald, Lucas Cranach the Elder and Hans Holbein the Elder.

Other original and unusual activities are scheduled throughout the year:

<https://www.musee-unterlinden.com/evenements/>

4.3 The Café Restaurant Schongauer

After your visit to the museum or during a stroll through Colmar, come and enjoy the Café Restaurant Schongauer and its terrace in the shade of the apple trees in the Cour de l'Ackerhof.

A personalised service allows you to eat a delicious lunch at anytime. You can enjoy a menu of simple dishes, as well as delicate pastries in the afternoon.

Chef Aurélien Paget offers a range of formulas specially designed for group lunches and dinners. Based on the number of guests, the restaurant can also be privatized for an exclusive experience.

Our “Gourmand’Art” and “Your museum !” group packages combine discovery and gourmet delights, with a guided tour of the collections and a delicious meal at the Café Restaurant Schongauer.

<https://www.musee-unterlinden.com/visites-et-activites/cafe-restaurant-schongauer/>



© Musée Unterlinden, Colmar



© Musée Unterlinden, Colmar



© Musée Unterlinden, Colmar



© Musée Unterlinden, Colmar

5 Reception details

5.1 Booking

Booking terms

Advance booking required

- Maximum 25 participants per group (including guides on guided tours)
- 30 minutes between each group departure to optimise visitor flow.
- Guided tour: please arrive 15 minutes before the start of the tour to collect your tickets and audio equipment.
- Reservations become effective once the signed confirmation of reservation has been returned to us before the date of the visit, implying acceptance of the visitors' rules and regulations (which can be downloaded from our website).

How to book?

Bookings can be made:

- Using the online booking form on our website www.musee-unterlinden.com, under Professionals – Travel and Tourism Professionals and Associations

You will be send a confirmation of receipt of your request by email.

- By telephone on +33 (0)3 89 20 22 79
- By email to reservations@musee-unterlinden.com

Information required for all reservation requests GROUP VISIT :

- Name of group
- Date and time of arrival
- Length of visit
- Type of visit
- Number of participants
- Full name of the person in charge
- Contact details (postal address, mobile phone number)

Bookings are mandatory:

• For groups of 10 people

For smaller groups, you may buy your tickets directly from the ticket office, on arrival, or on our website www.musee-unterlinden.com under Online Tickets.

• For any guided visit

Audio equipment (microphone and headphones) is compulsory and made available free of charge. Booking is essential.

Authorisation to act as a guide is free for outside guides (on presentation of professional ID). Once the booking is made, the MUSEE UNTERLINDEN will send a summary email accompanied by a booking confirmation to the address supplied by the Customer.

The booking confirmation constitutes a commitment and an irrevocable acceptance which can only be challenged under circumstances limited to those set out in these general conditions in the article entitled "Alterations, delays, cancellation and reimbursement".

A booking is only considered effective once it has been confirmed by our services.

The booking confirmation must be returned with a signature, stating "Signed and agreed" within two weeks of the booking. If the MUSEE UNTERLINDEN does not receive this signed confirmation within that time, the booking will automatically be cancelled.

Please note:

Guided visits begin strictly at the time indicated on the booking confirmation. Any lateness will result in a reduction of the length of the visit.

5.2 Special measures

1. Entrance fee and settlement

Only the person in charge of the group will go to the ticket counter to pay for the services after passing through baggage check.

2. Group entrance

Entrance to the museum reception hall and presentation of the group at the baggage check point and then at the counter where the audiophone/audioguide equipment is handed over.

3. Equipment

Audiophone equipment is compulsory for all guided tours and is provided free of charge. The audiophone and/or audioguide equipment is systematically disinfected after each use. You can bring your own headphones.

4. Flow

Visitors in groups must respect the flow of the visit for the comfort of all other visitors. They must not park for too long in front of the works.

5. Validity of admission

After the visit, admission to the museum remains valid throughout the day. Any participant wishing to return to the museum freely must mention the name of his or her group at the ticket office.

Please respect the arrival times and complete the various stages so that the visit can begin at the agreed time.

Lockers

The museum provides visitors with a free locker area where they can leave personal items.

This area is unattended and the Schongauer company accepts no responsibility for theft and/or damage.

Luggages

The museum is unable to accommodate large bags and suitcases.

Any visitor with luggage exceeding the maximum size will not be able to access to the museum areas (reception, exhibition rooms, shop and Café Restaurant).

6 Practical information

Address

Musée Unterlinden

Place Unterlinden – 68000 Colmar
Tel. +33 (0)3 89 20 15 50
info@musee-unterlinden.com
www.musee-unterlinden.com

Opening hours and prices

Every day except Tuesday 9am-6pm

Tuesday: closed

Closed on 01.01, 01.05, 01.11, 25.12

Admission: €13

Group rate: €11 per person (min. 15 pax.)

Young people (12 to 18 and students under 30): €8

Free: under 12 years old

1 free admission for every 20 paying visitors

Audioguide: €3 per person

Payment methods

- Bank transfer, before the visit or on receipt of invoice. Please quote your file number and date of visit
- If a participant withdraws after advance payment, no refund will be made
- Cash or bank card (VISA, MASTERCARD or AMERICAN EXPRESS), on the day of the visit
- Advance payment: distance selling, bank transfer
- Payment on receipt of invoice. Exchange / order form given on the day of the visit

All prices in the brochure include VAT.

Contacts

Booking department

Manuella Aubry
Phone number: +33 (0)3 89 20 22 79
reservations@musee-unterlinden.com

Development service

Samuel De Nita
Partnerships, events, space rentals, tailor-made packages
Phone number: +33 (0)3 89 20 19 14
developpement@musee-unterlinden.com

Margaux Gérard

Tourism and events development officer
Tél : +33 (0)3 89 20 10 30
commercialisation@musee-unterlinden.com

MUSÉE
UNTER
LINDEN